

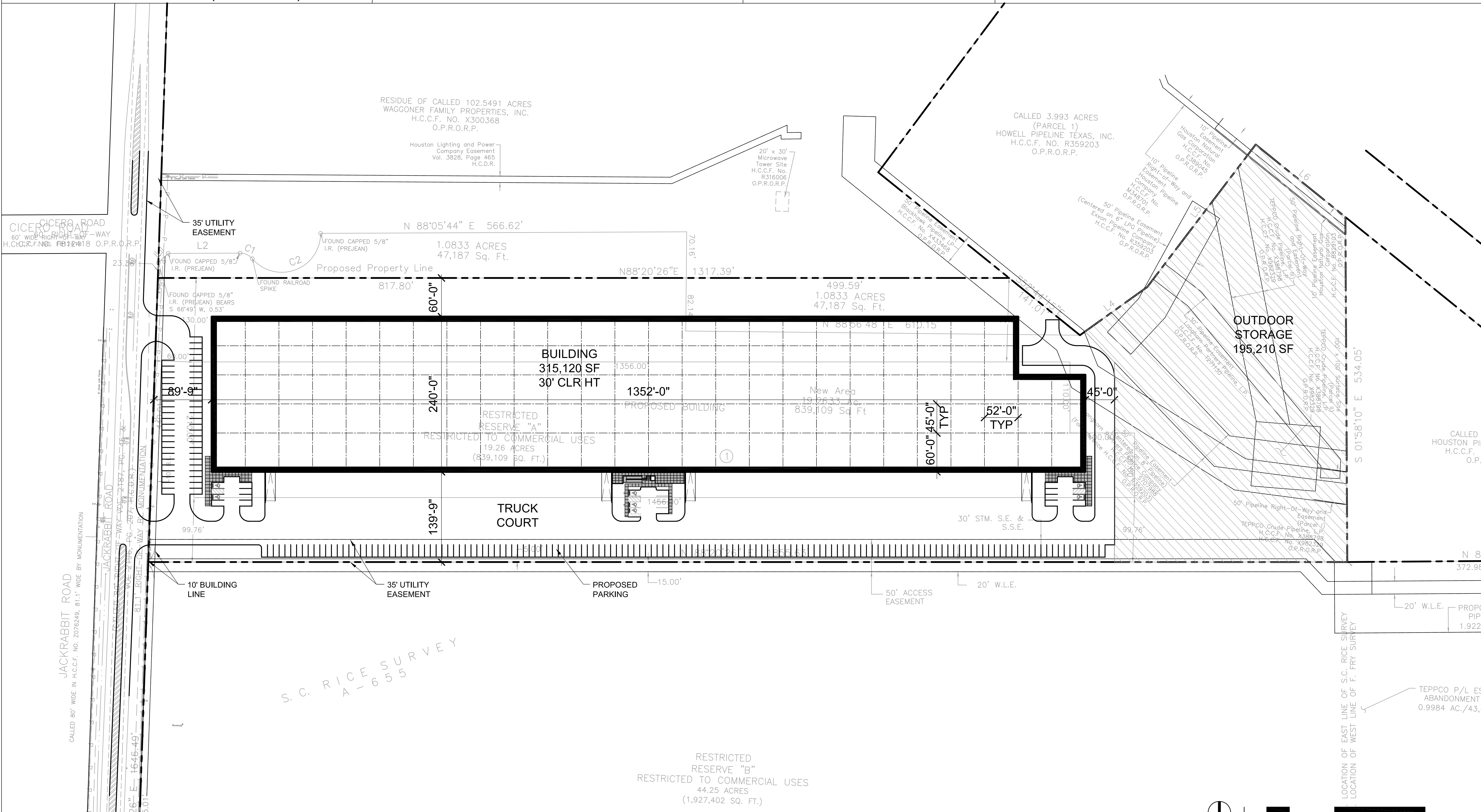
SATSUMA DISTRIBUTION CENTER - BUILDING ONE

SITE AREA = 19.26 ACRES (839,108 SF)

BUILDING AREA = 315,120 SF

COVERAGE = 37.60%

TOTAL PARKING SPACES = 214



SATSUMA STATION
a project for
PINPOINT COMMERCIAL, L.P.

**powers
brown
archi
ecture**